



**BENCHTOP DEBRIS CAPTURE
ACCESSORIES**



SplashGuard LED with Protective Face Shield

Air Attachment For Lathe
Item #: AA883

Dimensions (HxWxL): 12x8x14.5 in (31x20x37 cm)
Shipping Weight: 6 lb (3 kg)
Electrical: 100-120 V, 60 Hz, 0.3 A

- » Bright LED illuminated, with ON/OFF switch
 - » Powder coated heavy duty steel
 - » Connects to 1.5", 2", 2.5" or 3" diameter hose
 - » Replacement Shield available (#AA103)
 - » #AA883-MSV SplashGuard LED with Manual Slide Valve included
 - » #AA883-ASV SplashGuard LED with Auto-Start Valve included
 - » Included: 120-240 V power adapter (#AA193), LED light strip (#AA109), and SplashPan (#AR073)
- » Optional Upgrade Kit #2-0008-0011 adds Manual Shut-off Valve (MSV) to this accessory
 - » Optional Upgrade Kit #2-0008-0012 adds Auto-Start Valve (ASV) to this accessory

SplashGuard with LED Magnifier

Air Attachment For Lathe
Item #: AA783

Dimensions (HxWxL): 12x8x14.5 in (31x20x37 cm)
Shipping Weight: 6 lb (3 kg)
Electrical: 100-120 V, 60 Hz, 0.3 A

- » Bright LED illuminated, with ON/OFF switch
 - » LED frontal illumination does not cast shadow on objects worked on
 - » LED magnifier also serves as debris shield
 - » LED shield/magnifier (2X magnification) is fully adjustable
 - » Connects to 1.5", 2", 2.5" or 3" diameter hose
 - » Included: 120-240 V adapter (#AA193), SplashPan (#AR073)
 - » Optional: Manual slide version #AA783-MSV, Auto-Start Valve version: #AA783-ASV
- » Optional Upgrade Kit #2-0008-0011 adds Manual Shut-off Valve (MSV) to this accessory
 - » Optional Upgrade Kit #2-0008-0012 adds Auto-Start Valve (ASV) to this accessory

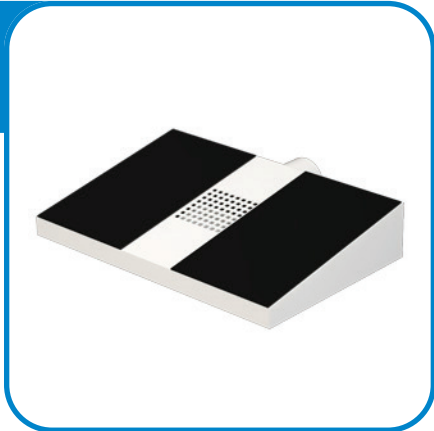


AirZone Lo-Profile

Low Profile Attachment Fits In Your Drawer
Item #: AA754

Dimensions (HxWxL): 2x10x6.5 in (5x25x17 cm)
Shipping Weight: 3 lb (1 kg)

- » Low profile, 2 in high, shield also available
- » AA075-1.5S with shield
- » Powder coated heavy duty steel
- » Connects to your dust collector: 1.5", 2", 2.5" or 3" dia. hose
- » Optional Shields:
3x4"(h) #AR198, 8.75x8.75"(h) #AR198, 6x8.75(h)" #AR196
- » Also available with integrated Automatic Start Valve (#AA754-ASV) or integrated Manual Slide Valve (#AA754-MSV)
- » Optional Upgrade Kit #2-0008-0011 adds Manual Shut-off Valve (MSV) to this accessory
- » Optional Upgrade Kit #2-0008-0012 adds Auto-Start Valve (ASV) to this accessory



AirZone Dust Hood, Space-Saving Containment System

Capture your zirconia disk blowout and keep room clean and healthy!
Item #: AA731

Dimensions (HxWxL): 9x10x6.5 in (23x25x17 cm)
Shipping Weight: 6 lb (3 kg)

- » Compact containment enclosure
- » Downdraft airflow helps keep contaminants away from breathing zone
- » Clear-Wall design: high visibility transparent walls
- » Hinged face shield swings up and away for better visibility
- » Gasket cushions for ergonomic hand support
- » Connects to your dust collector: 1.5", 2", 2.5" or 3" diameter hose
- » Also available with integrated Automatic Start Valve (#AA731-ASV) or integrated Manual Slide Valve (#AA731-MSV)
- » Optional Upgrade Kit #2-0008-0011 adds Manual Shut-off Valve (MSV) to this accessory
- » Optional Upgrade Kit #2-0008-0012 adds Auto-Start Valve (ASV) to this accessory

AirZone with LED Magnifier, Air Attachment For Hand-piece

Downdraft airflow helps keep contaminants away from breathing zone
Item #: AA760

Dimensions (HxWxL): 12x10x6.5 in (31x25x17 cm)
Shipping Weight: 6 lb (3 kg)
Electrical: 120-240 V, 60 Hz, 0.3 A

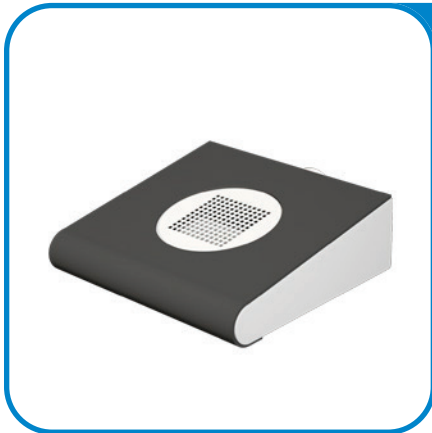
- » Bright LED illuminated, with ON/OFF switch
- » Adjustable magnifier mounts separately onto accessory
- » LED Magnifier also serves as debris shield
- » Gasket cushions for ergonomic hand support
- » Connect to your dust collector: 1.5", 2", 2.5" or 3" diameter hose
- » Included: LED Magnifier with 120-240 V adapter (#AA555-17)
- » Also available with integrated Automatic Start Valve (#AA760-ASV) or integrated Manual Slide Valve (#AA760-MSV)
- » Optional Upgrade Kit #2-0008-0011 adds Manual Shut-off Valve (MSV) to this accessory
- » Optional Upgrade Kit #2-0008-0012 adds Auto-Start Valve (ASV) to this accessory



Fishmouth Mini Compact Workbench Air Attachment

Dimensions (HxWxL): 4x6x5.5 in (10x15x14 cm)
Shipping Weight: 2 lb (1 kg)

- » Powder coated heavy duty steel
- » Attaches to a 1.5 in (38 mm) hose diameter
- » Compact is ideal for dentist
- » Smaller form factor, perfect for portability



AirPort Lo-Profile

Downdraft airflow helps keep contaminants away from breathing zone

Item #: AA765

Dimensions (HxWxL): 3.5x10x9 in (90x25x23 cm)
Shipping Weight: 5 lb (2 kg)

- » Gasket cushions for ergonomic hand support
- » Powder coated heavy duty steel
- » To attach a Slide-Valve, call for part number, depends on connecting hose
- » Connects to your dust collector: 1.5", 2", 2.5" or 3" dia, hose
- » Also available with integrated Automatic Start Valve (#AA765-ASV) or integrated Manual Slide Valve (#AA765-MSV)
- » Optional Upgrade Kit #2-0008-0011 adds Manual Shut-off Valve (MSV) to this accessory
- » Optional Upgrade Kit #2-0008-0012 adds Auto-Start Valve (ASV) to this accessory

AirPort Dust Hood, Space-Saving Containment System

Capture your zirconia disk blowout and keep room clean and healthy!

Item #: AA732

Dimensions (HxWxL): 9x10x9 in (23x25x23 cm)
Shipping Weight: 6 lb (3 kg)

- » Compact containment enclosure
- » Clear-Wall design: high visibility transparent walls
- » Downdraft airflow helps keep contaminants away from breathing zone
- » Hinged face shield swings up and away for better visibility
- » Gasket cushions for ergonomic hand support
- » Connects to your dust collector: 1.5", 2", 2.5" or 3" diameter hose
- » Also available with integrated Automatic Start Valve (#AA732-ASV) or integrated Manual Slide Valve (#AA732-MSV)
- » Optional Upgrade Kit #2-0008-0011 adds Manual Shut-off Valve (MSV) to this accessory
- » Optional Upgrade Kit #2-0008-0012 adds Auto-Start Valve (ASV) to this accessory



AirPort with LED Magnifier, Workbench Air Attachment

Downdraft airflow helps keep contaminants away from breathing zone

Item #: AA722

Dimensions (HxWxL): 12x10x9 in (31x25x23 cm)
Shipping Weight: 10 lb (5 kg)
Electrical: 100-120 V, 60 Hz, 0.3 A

- » Bright LED illuminated, with ON/OFF switch
- » Adjustable magnifier mounts separately onto accessory
- » LED Magnifier also serves as debris shield
- » Gasket cushions for ergonomic hand support
- » Connect to your dust collector: 1.5", 2", 2.5" or 3" diameter hose
- » Included: LED Magnifier with 120-240 V adapter (#AA555-17)
- » Also available with integrated Automatic Start Valve (#AA722-ASV) or integrated Manual Slide Valve (#AA722-MSV)
- » Optional Upgrade Kit #2-0008-0011 adds Manual Shut-off Valve (MSV) to this accessory
- » Optional Upgrade Kit #2-0008-0012 adds Auto-Start Valve (ASV) to this accessory

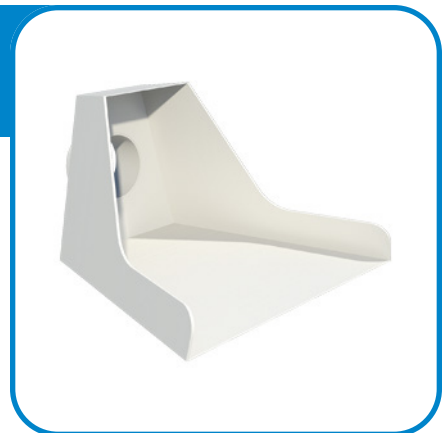
Fishmouth

Conventional Workbench Air Attachment

Item #: AA751

Dimensions (HxWxL): 5x8.5x9 in (13x22x23 cm)
Shipping Weight: 3 lb (1 kg)

- » Powder coated heavy duty steel
- » Wire mesh keeps parts from being drawn in
- » Connects to your dust collector: 1.5", 2", 2.5" or 3" diameter hose
- » Also available with integrated Automatic Start Valve (#AA751-ASV) or integrated Manual Slide Valve (#AA751-MSV)
- » Optional Upgrade Kit #2-0008-0011 adds Manual Shut-off Valve (MSV) to this accessory
- » Optional Upgrade Kit #2-0008-0012 adds Auto-Start Valve (ASV) to this accessory



Suction Wedge, Workbench Attachment at the Front of the Bench

Downdraft airflow helps keep contaminants away from breathing zone
Item #: AA343

Dimensions (WxL): 2.63x5.38 in (7x14 cm)
Shipping Weight: 6 lb (3 kg)

- » Wood wedge installs in front of bench
- » Wire mesh prevents items from being drawn in
- » Connects to 1.5 in diameter hose below
- » Under-the-counter support makes it easy to remove when not needed
- » Included: Steel under-the-counter support (#AA344)
- » Also available: Suction Wedge only, without steel under-the-counter support (#AA213)



Front Suction Adapter Workbench Attachment at the Front of the Bench Item #: AA709

Dimensions (HxWxL): 9.5x6.5x7.5 in (24x17x19 cm)
Shipping Weight: 2 lb (1 kg)

- » Secure to underside of workbench, grille faces away from user
- » Shield keeps fine particles away from breathing zone
- » Connects to your dust collector: 1.5", 2", 2.5" or 3" diameter hose
- » Included: 3x4 in shield (#AR105)
- » Optional, larger shields: 8.75x8.75" (h) #AR198, 6x8.75" (h) #AR196
- » Also available with integrated Automatic Start Valve (#AA709-ASV) or integrated Manual Slide Valve (#AA709-MSV)
- » Optional Upgrade Kit #2-0008-0011 adds Manual Shut-off Valve (MSV) to this accessory
- » Optional Upgrade Kit #2-0008-0012 adds Auto-Start Valve (ASV) to this accessory

Bench Downdraft Adapter

Adapter only
Item #: AA782

Dimensions (HxWxL): 3x4x6 in (76x10x15 cm)
Shipping Weight: 5 lb (2 kg)

- » Installs to underside of workbench
- » Ideal to install beneath drawer
- » Powder coated heavy duty steel
- » Connects to 1.5, 2, 2.5 or 3 inch diameter hose
- » Optional Upgrade Kit #2-0008-0011 adds Manual Shut-off Valve (MSV)
- » Optional Upgrade Kit #2-0008-0012 adds Auto-Start Valve (ASV)
- » #AA782-MSV - Bench Downdraft Adapter with Manual Slide Valve included
- » #AA782-ASV - Bench Downdraft Adapter with Auto-Start Valve include



Surface Connector Port, for polishing and grinding

Capture from top of workbench to collector below
Item #: AA188-03

Dimensions (HxWxL): 3x4x11 in (8x10x28 cm)
Shipping Weight: 7 lbs (3 kg)

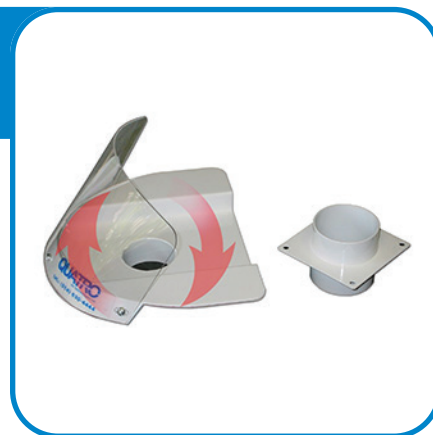
- » Includes removable black plastic frame, filter pad and connection box below
- » Connection box installs to underside of workbench
- » Plastic frame installs either onto the box or into counter
- » Powder coated heavy-duty steel
- » Connects to a dust collector with 3 in diameter hose

360 Swivel

Top piece turns 360 for maximum convenience
Item #: A081

Dimensions (HxWxL): 4x8x7 in (10x20x18 cm)
Shipping Weight: 4 lb (2 kg)

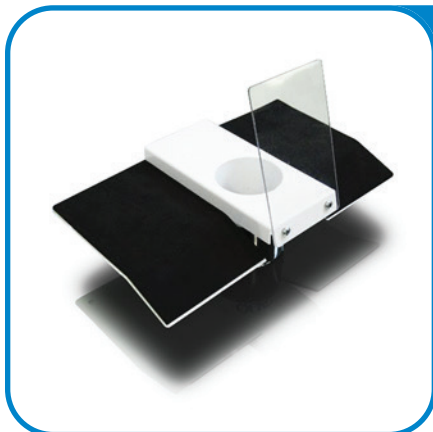
- » Installed anywhere on your workbench
- » Drill out a hole and connect hose from beneath
- » Easily removable
- » Ships in 2 pieces
- » Wire mesh keeps parts from being drawn in
- » Connects to 2.5 in diameter hose



AirTop Workbench Air Attachment Item #: A103

Dimensions (HxWxL): 7x11x6.5 in (18x28x17 cm)
Shipping Weight: 5 lb (2 kg)

- » Attaches to front top of workbench
- » Powder coated heavy duty steel
- » Gasket cushions for ergonomic hand support
- » Wire mesh screen keeps parts from being drawn in
- » To attach a ASV or MSV (Slide-Valve), contact us
- » Connects to your dust collector (1.5", 2", 2.5" diameter hose)
- » Dimensions (HxWxL): 7x11x6.5 in (18x28x17 cm)



FumeTrap

Source capture accessory helps keep contaminants away from breathing zone
Item #: H277

Dimensions (HxWxL): 8x12x6 in (20x31x15 cm)
Shipping Weight: 3 lb (1 kg)

- » Connects to MonoPure desktop odor eliminator
- » Contains odors within enclosure
- » Plexiglass, 4 in diameter connection in back

